



USmart Go

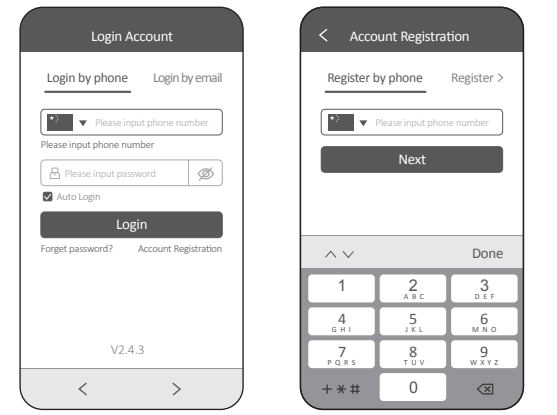
USmart Go APP for smart lock
Instruction Book

1. DOWNLOAD APP

Search "USmart Go" on Apple App Store or Google Play for your iOS/ Android device.

2. BASIC SETTING

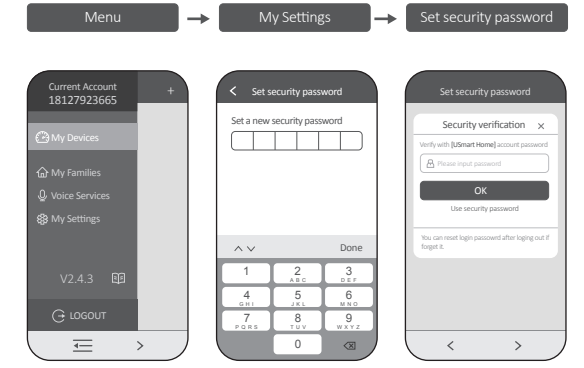
01 Registration and login
USmart Go users can register the account by mobile phone or Email which currently support 200 countries and regions on the world.



< 01 >

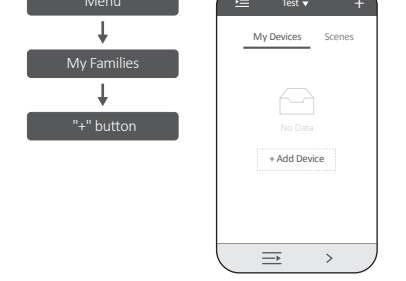
02 Setting Security Password

Set a security password for remote unlocking. Following the steps:



03 Create a Family

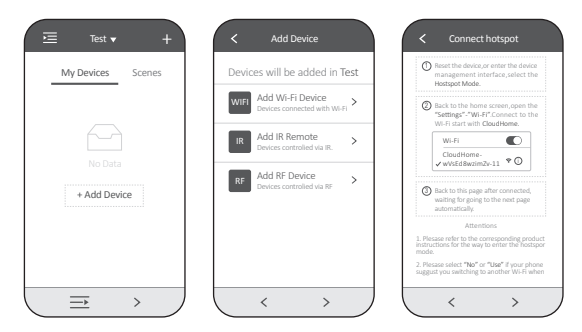
Every device associated with a Family, following the steps to create a family:



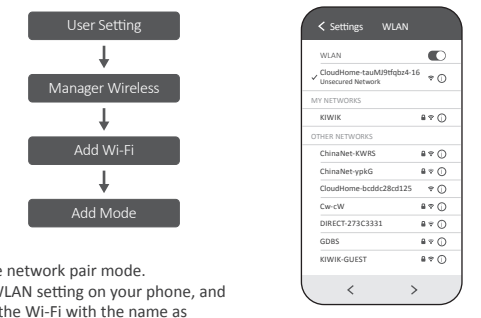
< 02 >

3. ADD LOCK ON APP

Open APP and click the "+" button at the upper right corner, choose "Add Wi-Fi Device" item.



Press the "*"#" button on the lock to enter the admin interface. Choose

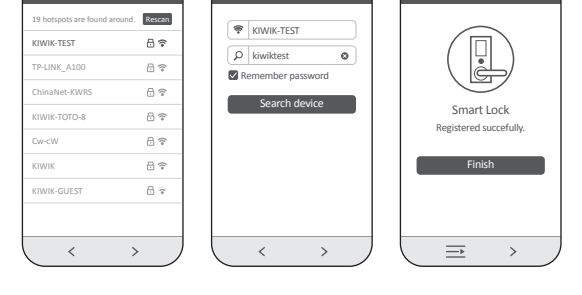


to enter the network pair mode. Go to the WLAN setting on your phone, and connect to the Wi-Fi with the name as "CloudHome-XXXX-16".

< 03 >

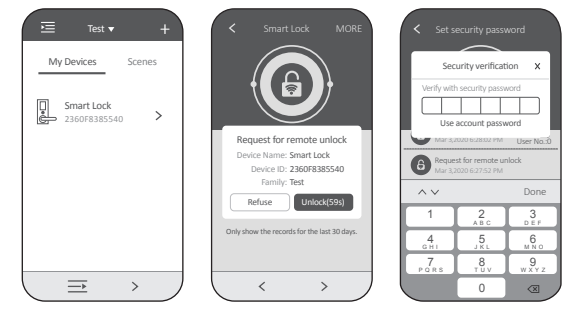
4. USMART GO FUNCTION

Go back to the App, choose the Wi-Fi of your home and input the password. Click "Search device" and waiting for connection.



01 Remote Unlock

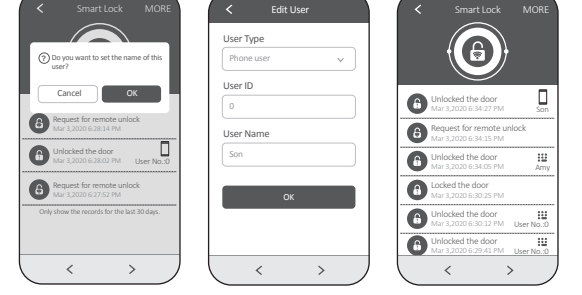
Press "doorbell" on the lock to trigger a remote unlock request, you'll see a pop-up window on our app, enter your security password to unlock.



< 04 >

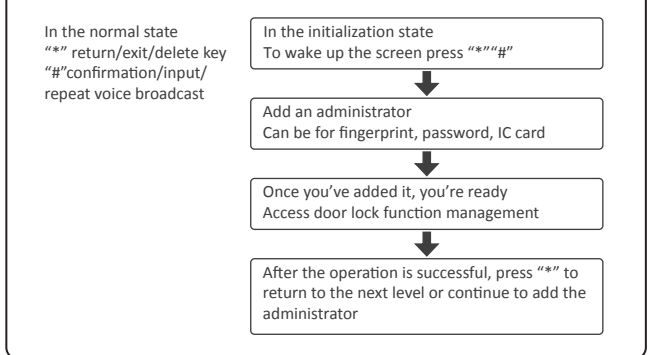
02 Remark an User

Click the event list to remark an user

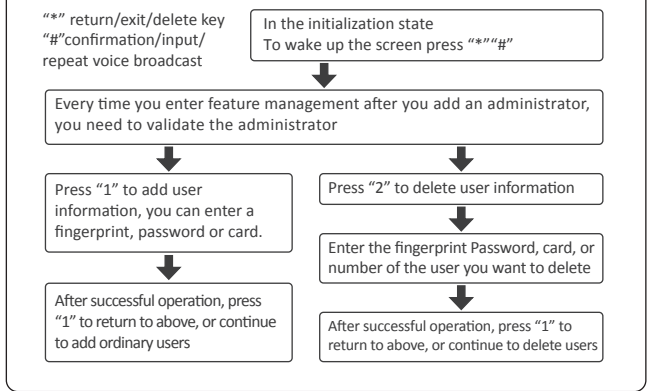


< 05 >

1. ACCESS VDOOR LOCK FUNCTION MANAGEMENT (NO NET WORKING MODE)

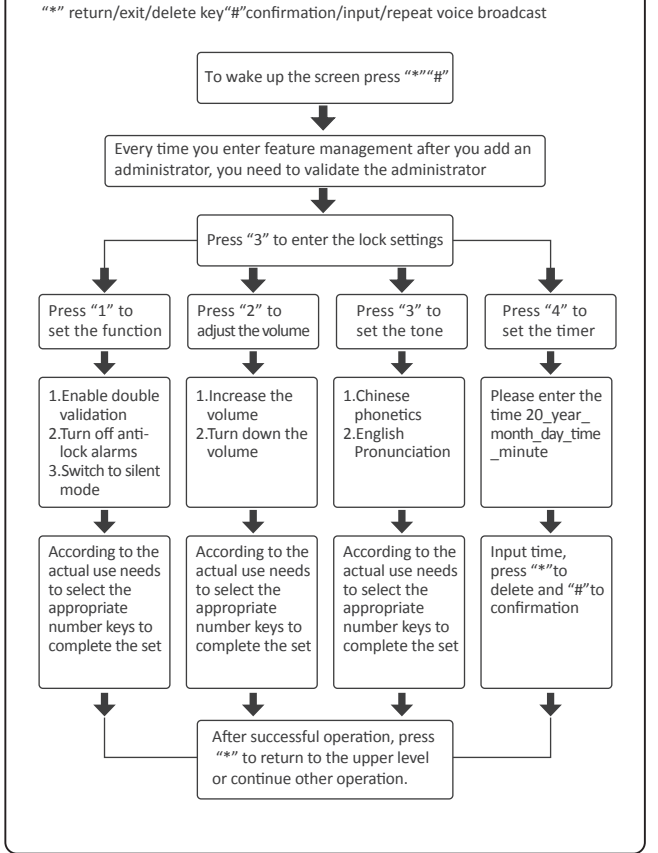


2. ADD USER, DELETE USER



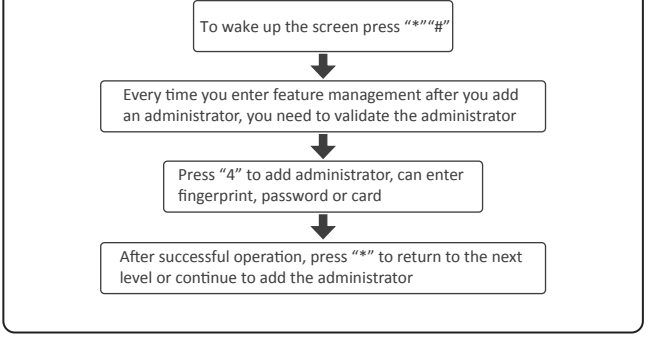
< 01 >

3. LOCK SETTINGS

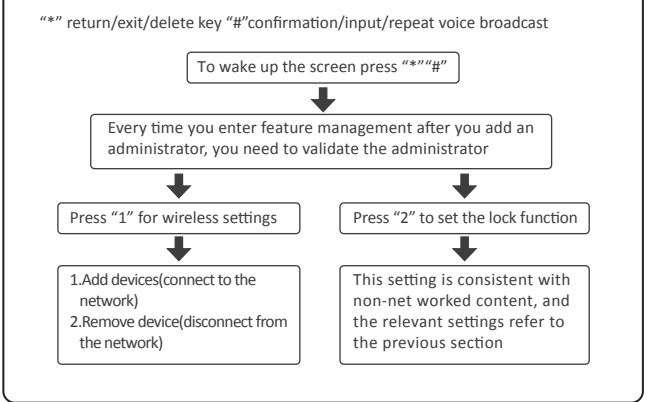


< 02 >

4. ADD AN ADMINISTRATOR

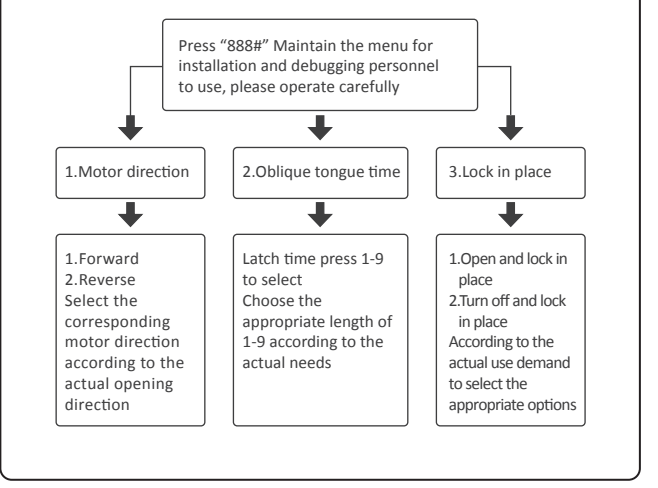


5. ACCESS DOOR LOCK FUNCTION MANAGEMENT (WITH NETWORKING MODE)OPTIONAL



< 03 >

6. MAINTENANCE MENU



7. RESTORE FACTORY SETTINGS

The card needle long presses the keyhole key 5 seconds, does not loosen

< 04 >